



News of the ISOLDE Group

29 January 2013
Maria J. G. Borge



OUTLINE

- Courses and activities during 2013
- Fellows Associates and students
- ENSAR Financial balance
- Financial situation of the collaboration
- ISOLDE workshop 2013

Courses and activities 2013

● Statistical methods for Nuclear Physics

Karsten Riisager

18-20 of March

Please book room fast it is a very busy week.

Physics courses for Summer students: 3 lecturers July 2012

1. Rick Casten: Themes in the physics of Atomic Nuclei, complex interaction and extraordinarily simple behaviour
2. Magda Kowalska: ISOLDE facility
3. Magda Kowalska: ISOLDE Physics

2 more lectures by Rick Casten for the Physics Group (22nd July-2nd August)

-The new Frontier of exotic Nuclei—shattering cherished paradigms and building a new synthesis

-Emergent collectivity, phase transitions and cosmological consequences.

Shell model for non Practitioners

By Alfredo Poves et al

Fellows, associates & students

- Associate: Marek Pfützner (June 2013)
 - New applicant? Alfredo Poves
- CAS: Olof Tengblad (Jul-Dec 2013)
- Fellows: (dead lines 1 March, 3rd September)
 - ✓ Susanne Kreim, Dec2014 (+ 1y COFUND)
 - ✓ Elisa Rapisarda, Sept 2014
 - ✓ Monika Stachura, starting April 2013- March 2015
 - ✓ Jan Kurcewicz, nov 2013 (Applied Fellow, EU)

EXPECTED TO BE ABLE TO DEFEND A FELLOW CANDIDATURE FOR SEP application
- Doctoral student: Kara Lynch, August 2013.
 - APPLICANT FOR A NEW DOCTORAL STUDENT REQUIRED FOR MARCH !st.
- Technical student: Rikard Vinge, July 2013 (Twin-EBIS)
- Technicien: Julien Thiboud, August 2015 (Col + EU support (Aug 2014))
- User support: Jennifer Wetterings (50% Col + 50% PH)



ENSAR (European Nuclear Structure and Application Research)

- The aim of Integrated Activities in FP7 is to improve the access of European Researchers to facilities which are not in their country of Origin and to increase the output of these facilities. This is done through 3 types of work packages:
 - Trans-national access (TNA)
 - Networks (NA):
 - ✓ The EURISOL-NET Network in ENSAR (NA3,WP3, Y. Blumenfeld *leader*)
 - Task 1 : Coordination of R&D (Y. Kadi *leader*): First workshop at CERN 27-28 June 2011
 - Task 2: Physics and Instrumentation (A. Bonaccorso *leader*)
 - Joint research activities (JRA) :
 - ✓ ACTILAB (JRA2/WP8, Thierry Stora (EN) *Leader*).
Improvement of Actinide target technology for ISOL facilities.
 - ✓ PREMASS (JRA3/WP9) coordinated by Ari Jokinen (JYFL Finland)
Task. Improvement of beam purity and emittance in ISOL facilities.
Valentin Fedosseev (EN) leads a task
- ENSAR started on Sept. 1, till August 31st, 2014.
- GANIL is the coordinating institute. Muhsin Harakeh is the coordinator.
- Y.B.<<>> M.J.G. Borge is the CERN representative

Trans-National Access (TNA)

● Participating TNA facilities

- GANIL (France; coordinating institution)
- GSI (Germany)
- LNL + LNS (Italy)
- JYFL (Finland)
- KVI (Netherlands)
- ALTO (France)
- CERN/ISOLDE: [TNA6](#); [WP 19](#)

● Two types of funding:

- Travel and subsistence for visiting scientists
- Partial reimbursement of access costs
 - ✓ 50% technician 2 years (extension of Julien Thiboud contract)
 - ✓ Applied fellow for 2 years: Jan Kurcewicz (Dec 1st, 2011)

TNA Selection

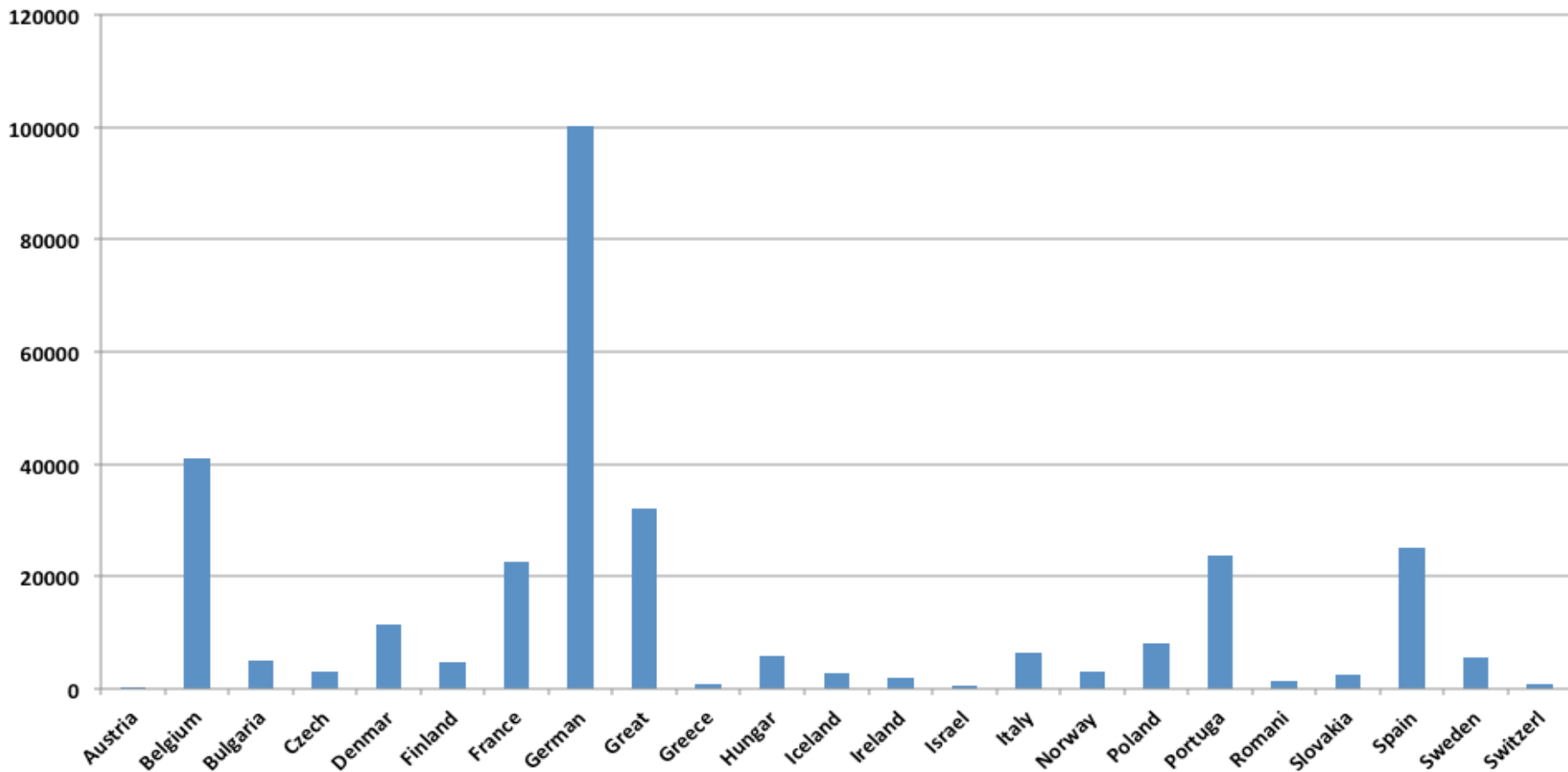
- Selection Committee
 - Maria JG Borge (CERN, Isolde Physics Group Leader)
 - Yorick Blumenfeld (Madrid, Chair of ISOLDE collaboration committee)
 - Peter Butler (Liverpool, INTC Chair)
 - Magdalena Kowalska (CERN, ISOLDE Physics coordinator)
 - Karl Johnston (Saarbrücken/CERN, ISOLDE Solid State Coordinator)
 - Karsten Riisager (Aarhus)
- Administration: Jennifer Weterings
- Two calls per year to scheduled experiments (April-August and September to December)
- NO Money will be spent in 2013

STATISTICS Until Jan, 2013

Number of beam hours-Full Contract	5200
provided as of 31/12/12	
Number of users- full contract	400
Supported as of 31/12/12	352 (User counted 1 per IS-exp)
Number of days support- full contract	2800
Supported as of 31/12/12	2244
Number of projects – full contract	60
Supported as of 31/12/12	75 (different experiments)
T&S – full contract (EUR)	252000
Distributed as of 31/12/12	256947 (309672CHF)
Number Experiments / researchers (2011)	75 / 352
Rate of days per experiment (2011)	4.69 researcher / exp
Access costs – full contract (EUR)	291408
Access costs up to 31/12/12	0
Use of access costs	½ technician Sep 2011- Aug 2013 1 liaison post-doc Dec 2011-Nov

Summary of Expenditure per country

ENSAR TNA Subsistence Expenditure (CHF) by Country of Institute (Sept. 2010 - Dec. 2012)





Collaboration Matters

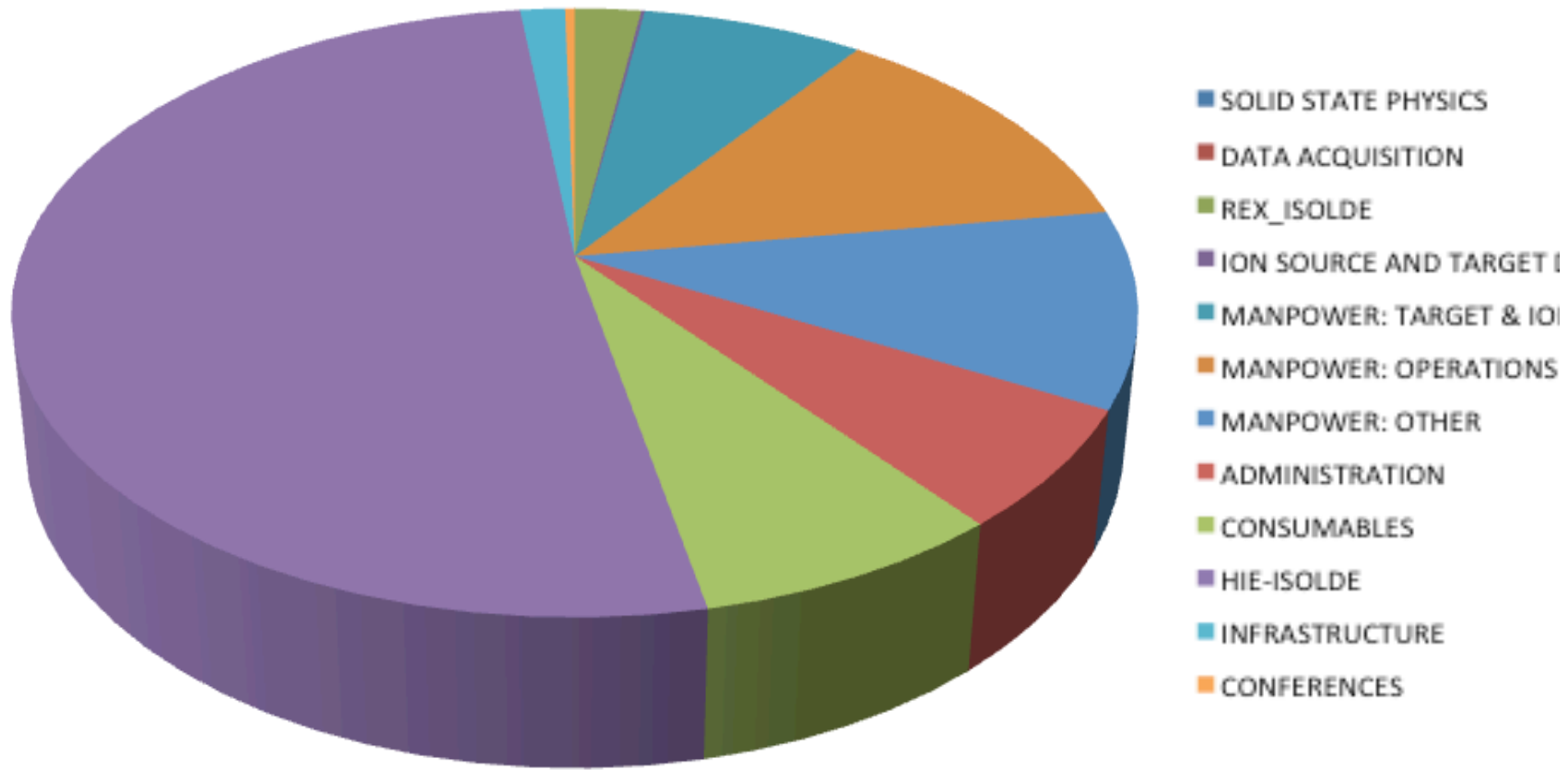
Income of the collaboration

Country	Amount per year (CHF)	Signed copy of MoU received
Belgium	60.000	✓
CERN	60.000	✓
Denmark	60.000	✓
Finland	60.000	✓
France	60.000	✓
Germany	60.000	✓
Greece		
India	40.000	✓
Ireland	10.000	
Italy	60.000	✓
Norway	60.000	
Romania	30.000 (5y)	✓
Spain	60.000	
Sweden	60.000	✓
United Kingdom	60.000	✓

Chapters of Expenditures /2012

● Income / year \approx 740.000 →	2012 :	990.000
● Carry over 2011		354909.2
● Expenditure Chapters:		
➤ Solid state Physics		0
➤ Data Acquisition		0
➤ Rex-ISOLDE Operations		22303.13 (200 Mhz RF Amplifier)
➤ Ion Source and Target Development		1128.52
➤ Man Power:		
✓ Visiting Experts		39736.79
✓ Target & ion source		74104
✓ RILIS operation		59450
✓ REX-ISOLDE operation		62658 (technician, J. Thiboud)
✓ Student support		57681,85
✓ Seminars		4049,42
➤ Administration		61403,69
➤ Engineering Assistance		
➤ Consumables		
✓ Electronic Pool,		18033,11
Liquid Nitrogen		52225,6
➤ HIE-ISOLDE (since 2009)		300000 + 200000 (2012-2015)
➤ Infrastructure & support experiments		15918,9
➤ Conferences & schools & Workshop		3220,53
➤ GRAND TOTAL		975028,92

ISOLDE COLLABORATION EXPENDITURE 2012



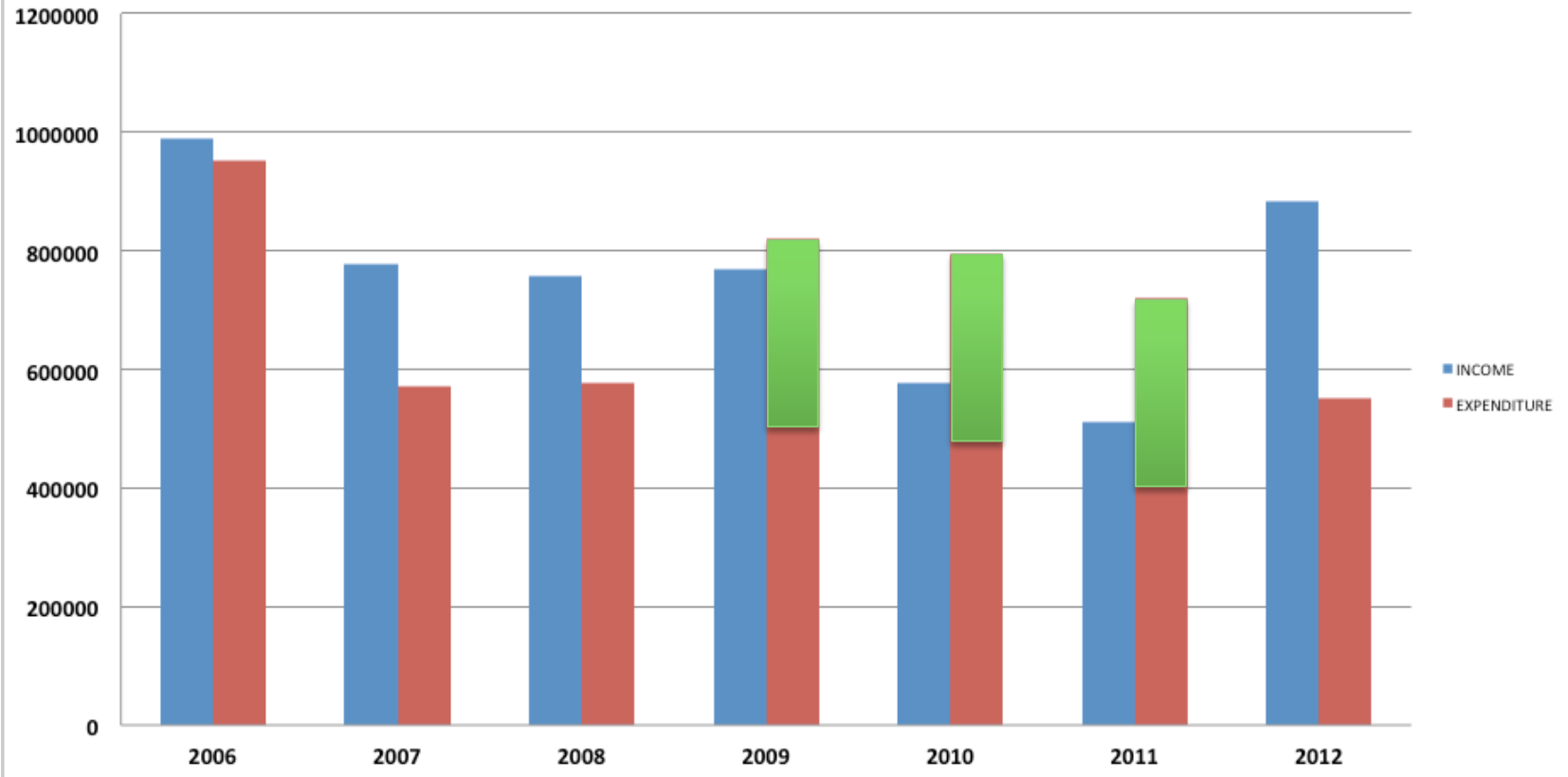
Budget for 2013 (CHF)

● Man Power :	
➤ Experts	35.000
➤ Target & Ion source	8.000 (A. Gottberg Jan-April)
➤ RILIS	3.400 (Seliverstov Jan-Feb)
➤ Rex-Operation	83792 (Thiboud 50% +100%Sep-Dec)
➤ Student support	25.000 (dinko Atanasov (Feb-july 1500 CHF)
➤ ISOLDE Seminars	6.000
	161.192
● Administration	47.000 (35.000 Wetterings)
● Rex-ISOLDE Operations	50.000 (200 Mhz RF Amplifier)
● Consumables	40.000 (!5000 e-pool + 25000 LN2)
● Conferences & schools	10.000
● TOTAL	250.000
● Contributions	740.000
● Carried over	391890.28
● Contribution to HIE-ISOLDE of	500.000
● Solid State remaining from the 249.000 CHF deposited 1997 to build a beam line from REX to the platform	85.574,52 CHF (Solid State & Bio)

Important dates

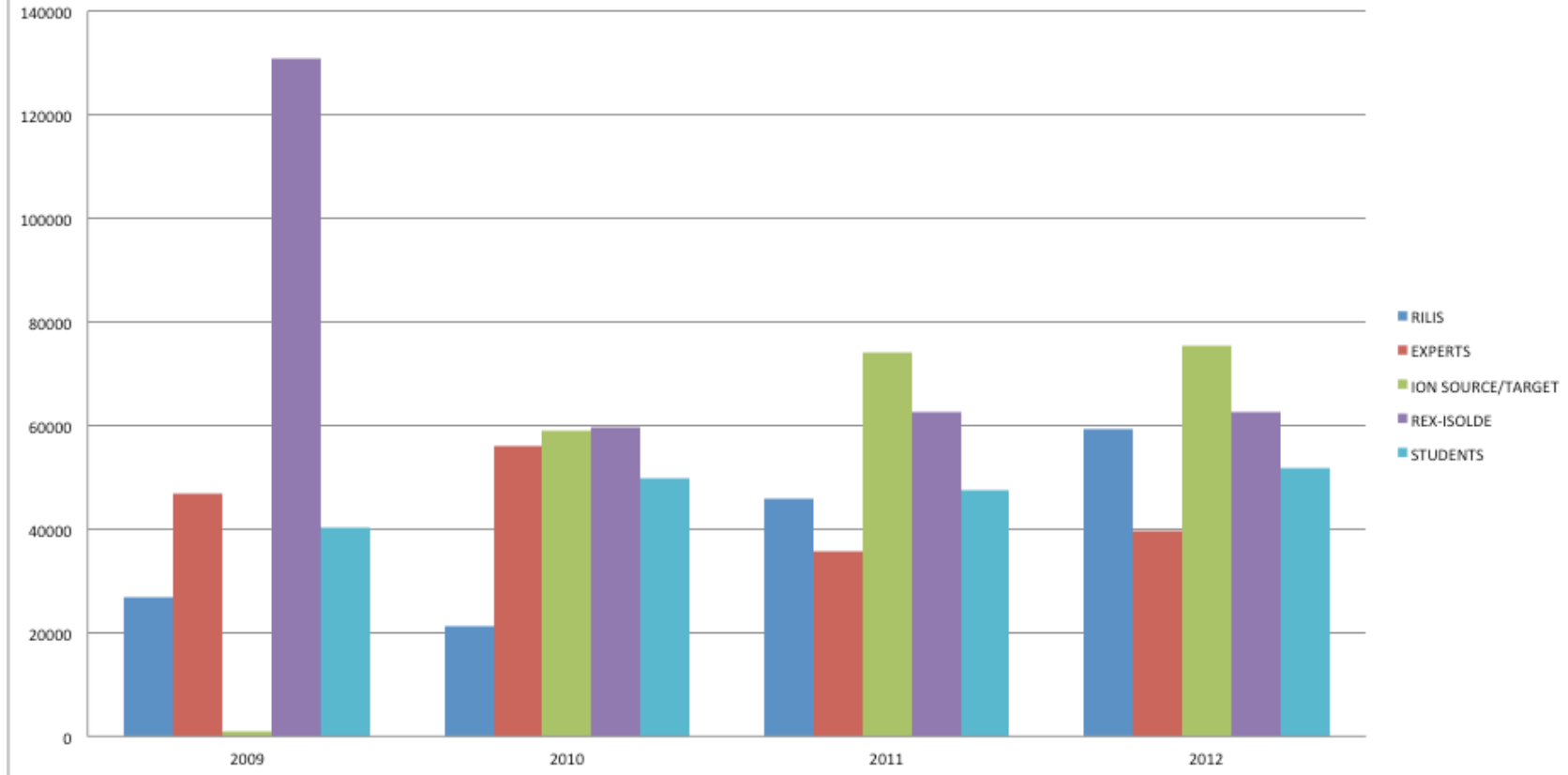
- **ISOLDE NewsLetter** : deadline 28 of february
- ISOLDE ISCC meetings
 - INTC 26 / 27 of June
 - INTC 23 / 24 October
- **ISOLDE Workshop** 25 – 27 of November / 18 – 20 Nov / 16 – 18 Dec
(Plan to advertise to NuPECC to block the dates for ISOLDE)

INCOME & EXPENDITURE 2006 - 2012 /CHF



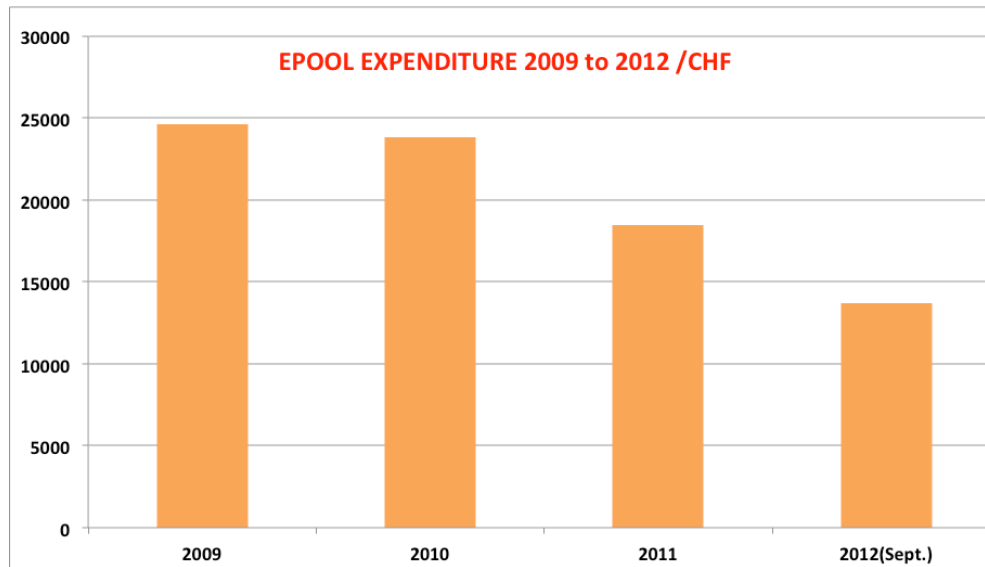
300.000 SCH transferred to the HIE-ISOLDE Project

MANPOWER EXPENDITURE 2009 - 2012 /CHF



In year 2009 we were still paying Didier Voulot
Average 2009-2011 = 255.000 / (2012) 291.071

Consumables



200 Modules
Many non identified
Annual Cost around
18.000 CHF
For Free after 15 years

In the order of 46.000
CHF

