

# ISOLDE scientific coordinator's report

ISCC meeting, May 19, 2008

A. Herlert, CERN PH-IS

Planning and resources for 2008  
Floor space reallocation

# Accelerator schedule 2008

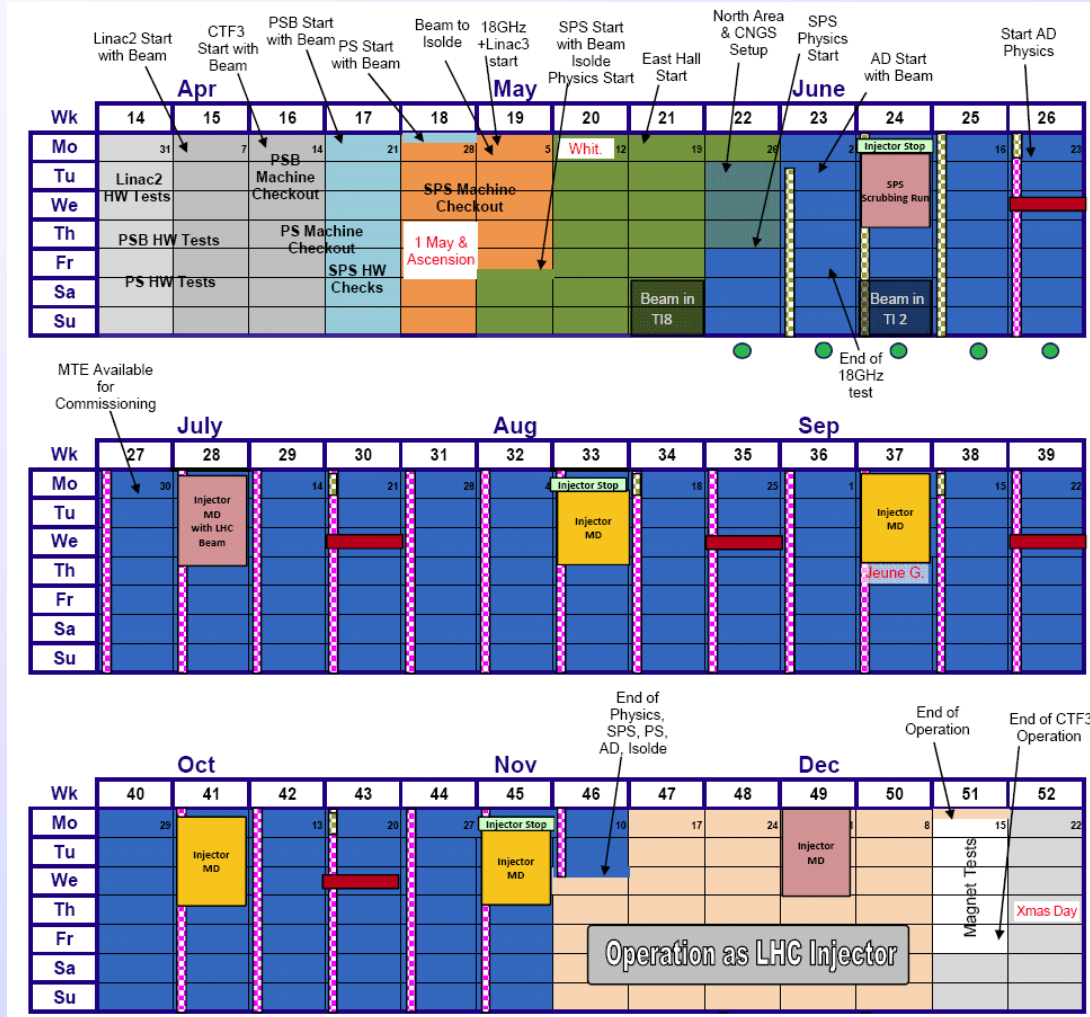
Approved by CERN Research Board November 28, 2007

## ISOLDE dates:

protons from PSB May 5  
 physics start ISOLDE May 9  
 protons stop November 12  
 (i.e. 27 weeks for physics)

Expected frequent changes of supercycles (as 2007)

Several long periods of MD without protons to ISOLDE (delivery of p not guaranteed)

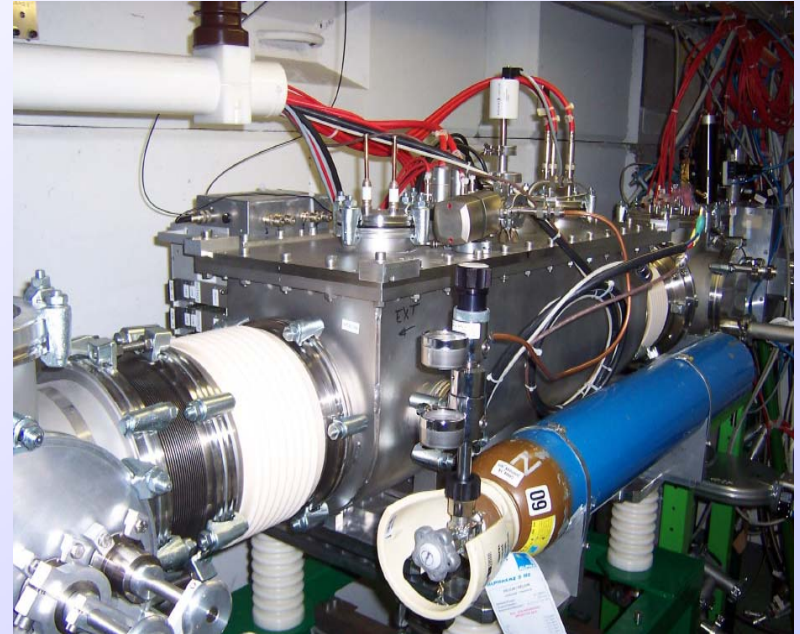


# ISOLDE beam requests 2008

- Limits in key resources
  - RILIS (installation of new solid state lasers, max 2000 h operation)
  - UC<sub>x</sub> targets (about 10 new units maximum)
- REX operation
  - MINIBALL ready for Physics June 1
- Schedule:
  - 470 RIB shifts left after 2007 for approved experiments
  - 231 RIB shifts from new proposals and addenda at February INTC meeting 2008
    - in total 701 RIB shifts for 2008
  - 551 RIB shifts requested
    - compare to 480 RIB shifts requested in 2007 with 407 scheduled shifts
    - requested RILIS shifts: 337 --> more than 2700 h operation
    - requested RIB shifts with UC target: 410 (together with RILIS: 308)

- ISCOOL

- maintenance during shutdown 2007/2008
- test in off-line period April 2008
- permanently installed in 2008
- running in transmission and bunch mode



- New tape station (IHPC Strasbourg):

- displacement time 100ms for 415mm
- to be installed in June 2008 at LA2 beam line

# ISOLDE schedule 2008 (first part)

## ISOLDE dates 2008:

2 weeks off-line period  
 protons started May 5  
 physics started May 9  
 protons stop Nov. 12

→ 27 weeks  
 for physics

So far scheduled:

- 23 IS experiments
- 17 target units  
(3 old units)
- 9 UC<sub>x</sub> targets  
(2 old units)

	Apr			check-out ISOLDE		Start off-line period	May	Start protons 2008	Jun						
Wk	14	15	16	17	18	19	20	21	22	23	24	25	26		
Mo		31	7	14	TISD 21	28	5	12	19	26	2	9	16	23	
Tu							IS445	IS445			IS466			IS468	
We								IS393						MTE setup	
Th					TISD	IS449 Ascension		IS413	IS463						
Fr						May Day		IS453	IS473			IS449		TISD	
Sa							IS445	IS450	IS466	IS390		IS468			
Su								IS442		IS442	IS464				

Preliminary →

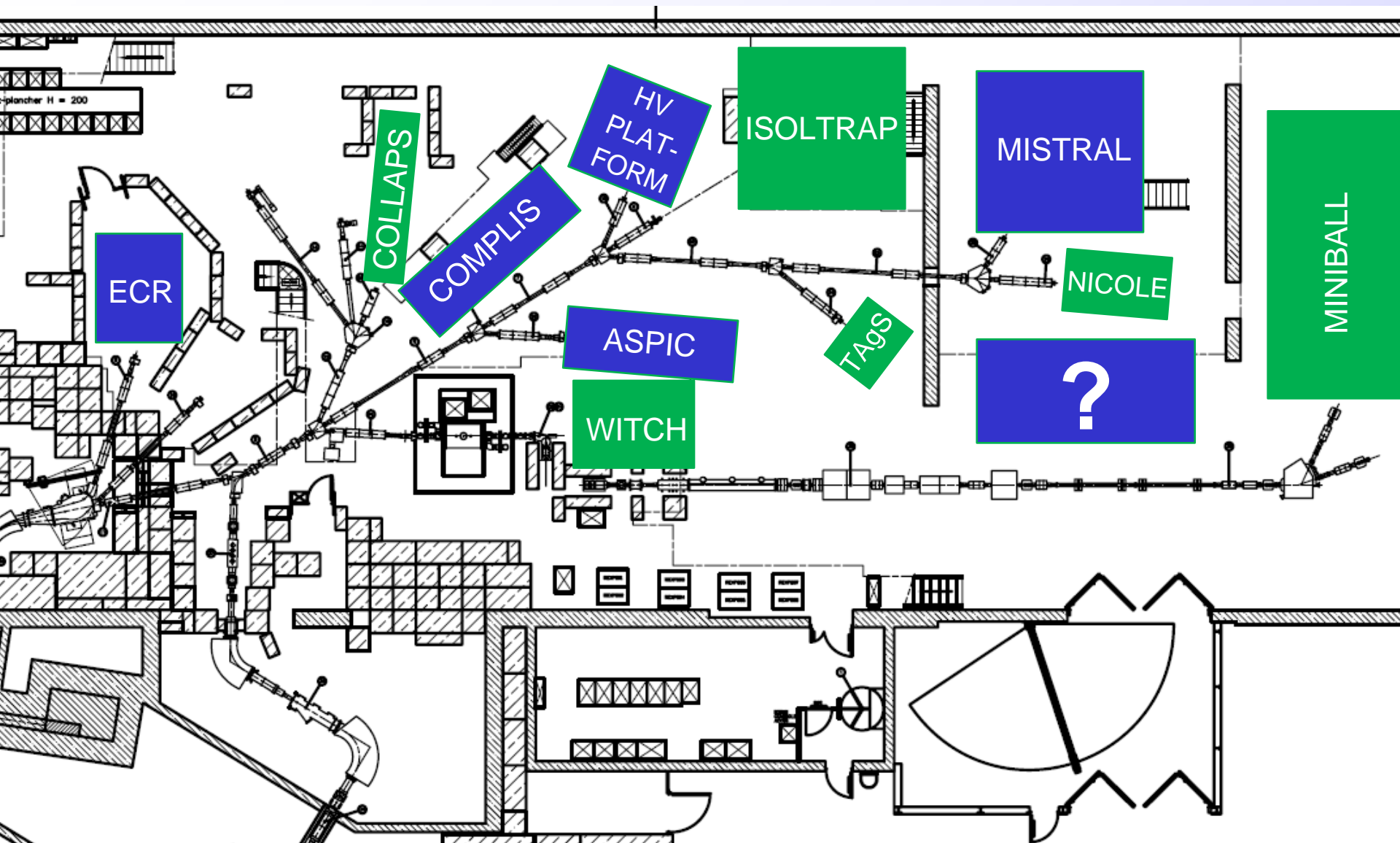
	Jul		Aug					Sep						
Wk	27	28	29	30	31	32	33	34	35	36	37	38	39	
Mo		30	7	TISD 14	21	IS435 28	4	11	IS460 18	IS461 25	1	8	15	22
Tu				IS447		IS434			IS458		IS465			
We					MTE setup					MTE setup				MTE setup
Th	IS457			IS358	IS439	IS458		IS461				Jeune Gen.		
Fr			IS473	IS435			IS460		IS465					
Sa		TISD	IS398					IS461						
Su														

	Oct			Nov					Dec					
Wk	40	41	42	43	44	45	46	47	48	49	50	51	52	
Mo		29	6	13	20	27	3	10	17	24	1	8	15	22
Tu														
We					MTE setup									
Th														
Fr														Christmas
Sa														CERN closure
Su														

Stop  
protons  
2008



# Follow up: Reallocation of floor space for experiments

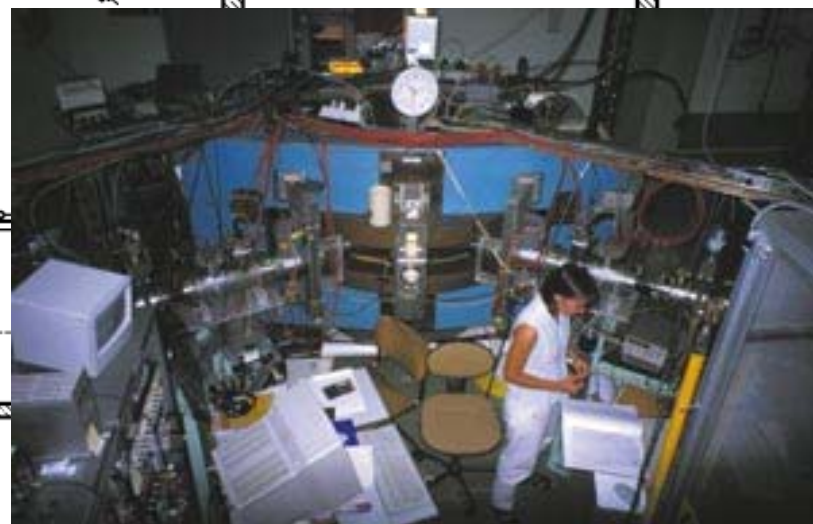


# Follow up: Reallocation of floor space for experiments

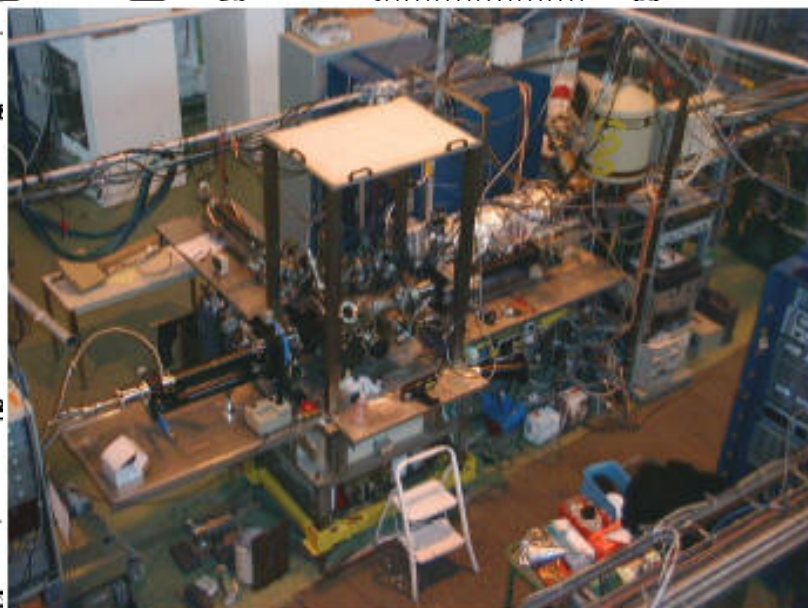
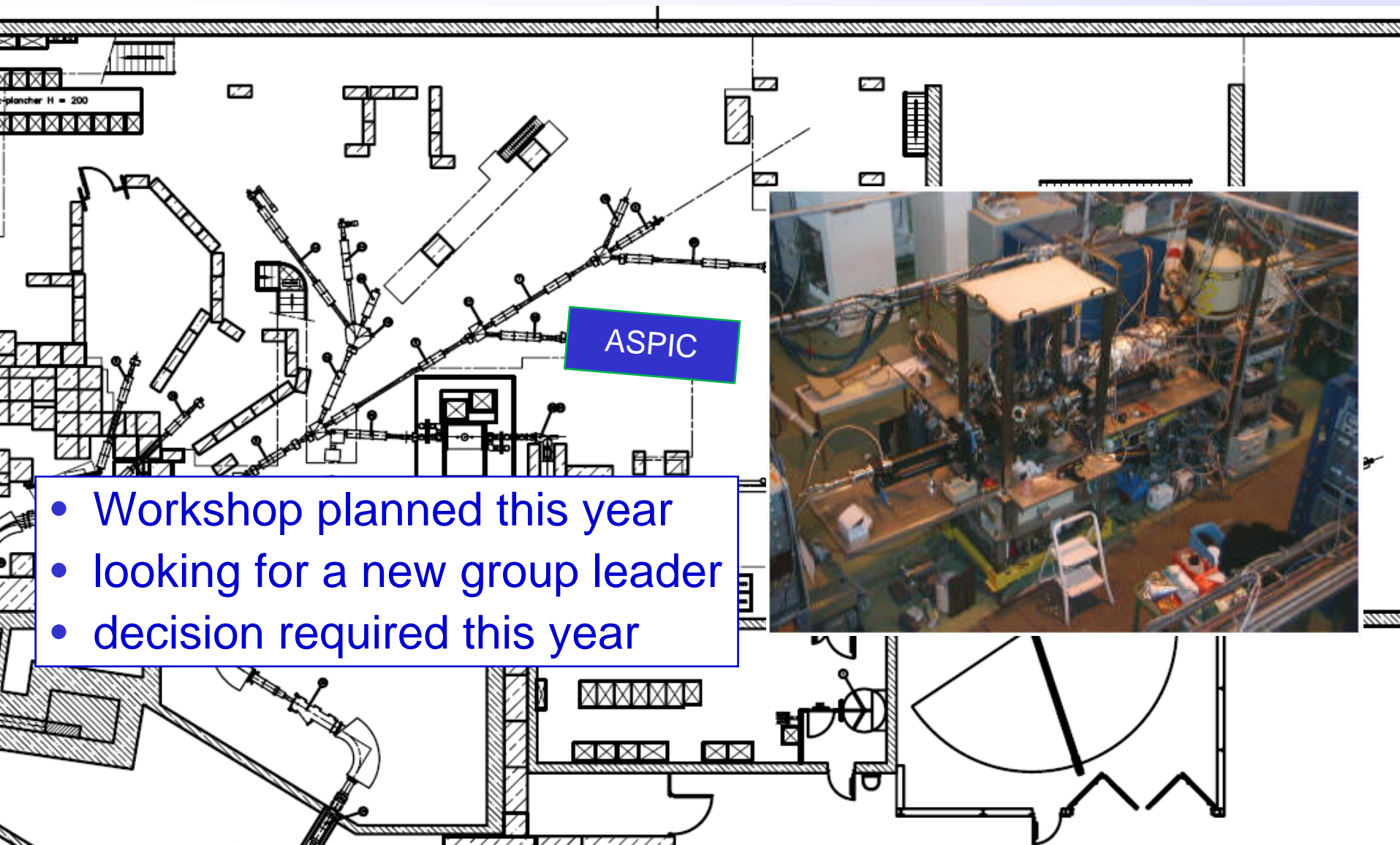
INTC requested status report

- not active ( $^{14}\text{Be}$  too low yield)
- future unclear (manpower?)

MISTRAL

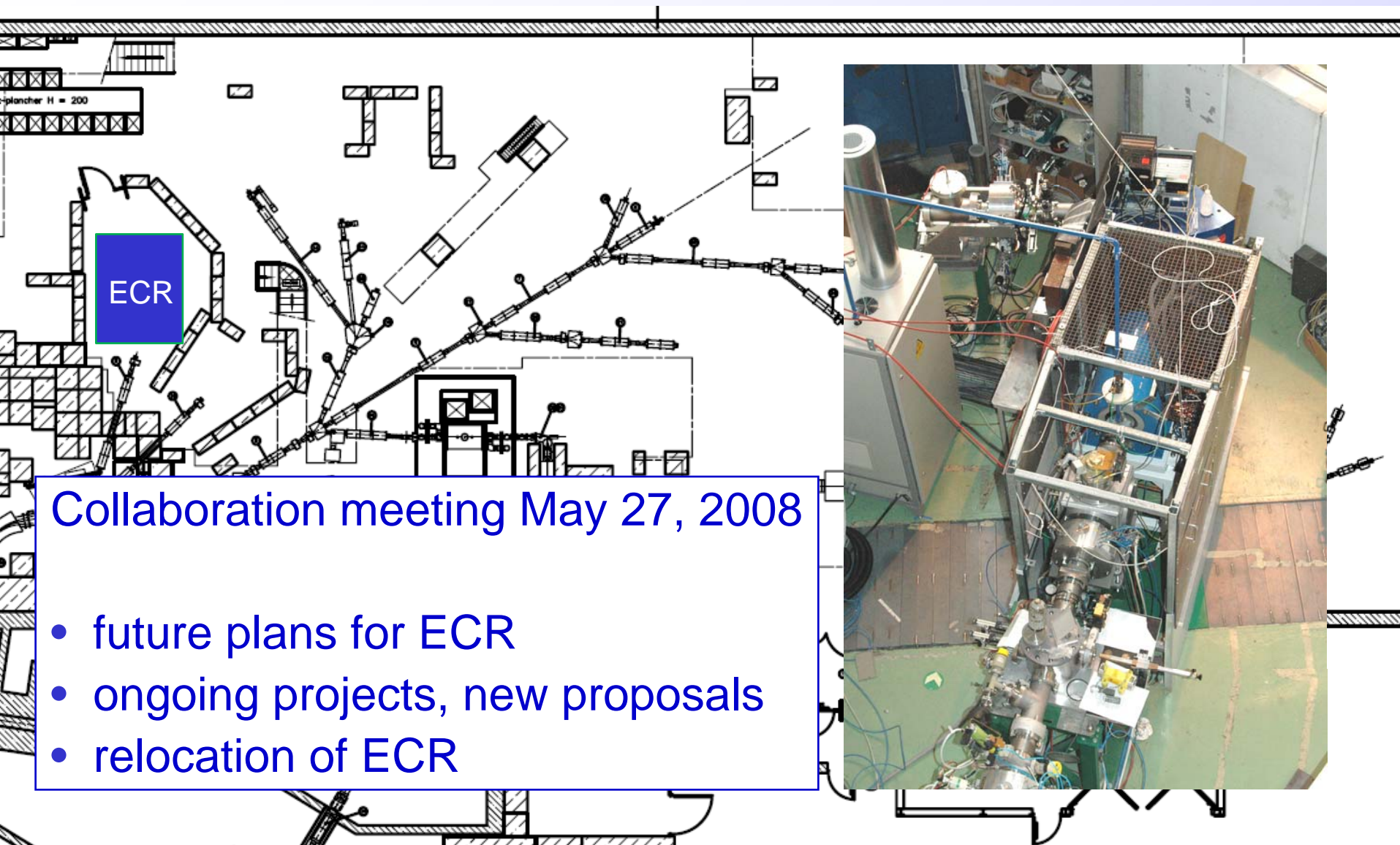
# ASPIC setup (W.-D. Zeitz et al.)



- Workshop planned this year
- looking for a new group leader
- decision required this year



# ECR charge breeder

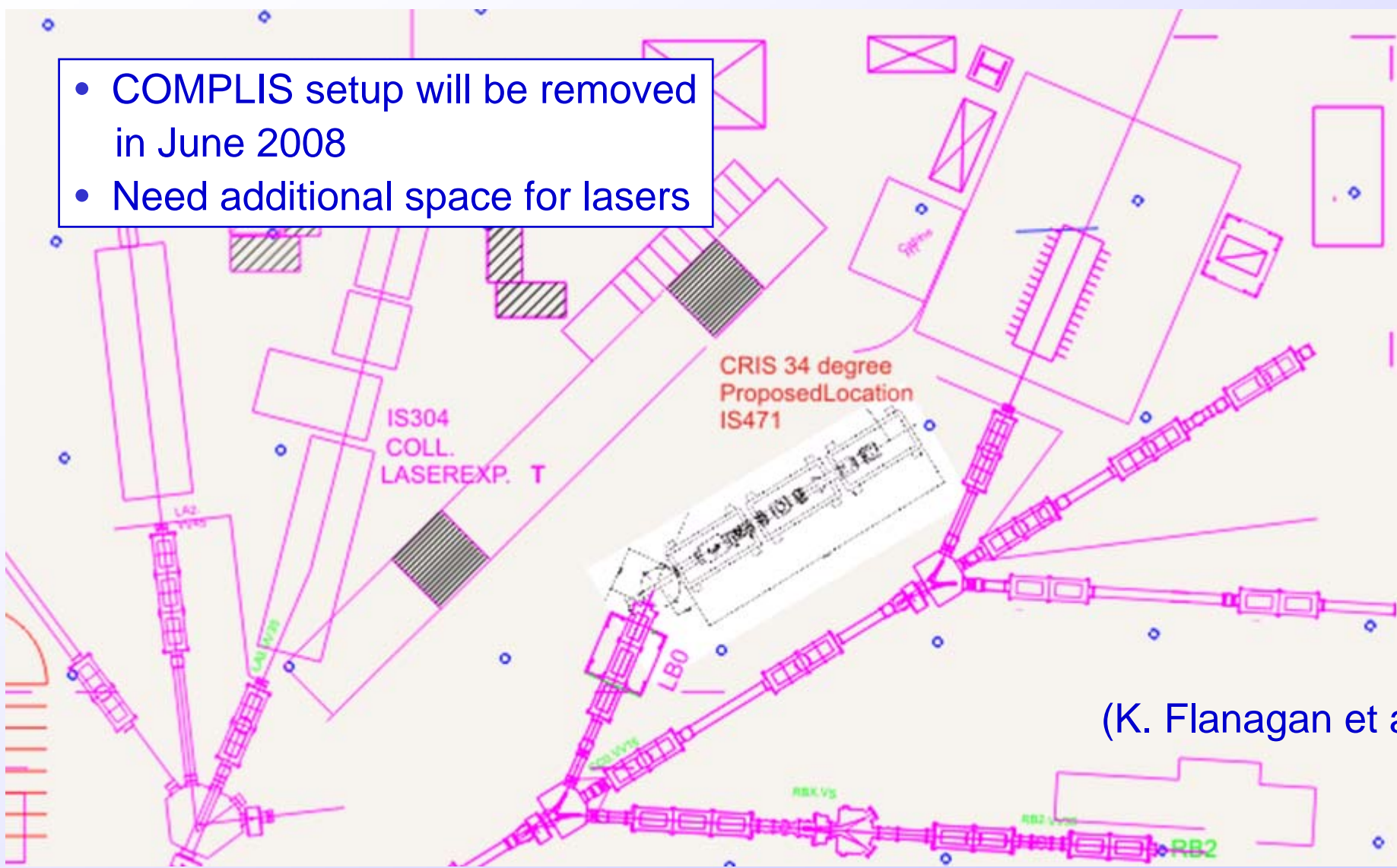


Collaboration meeting May 27, 2008

- future plans for ECR
- ongoing projects, new proposals
- relocation of ECR

# New experimental setup: CRIS

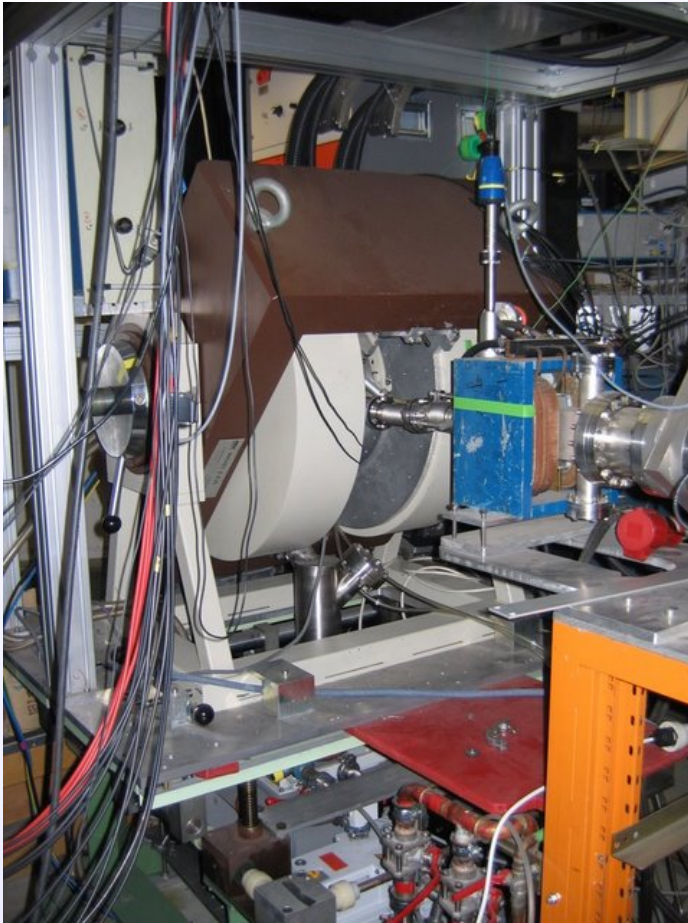
- COMPLIS setup will be removed in June 2008
- Need additional space for lasers



(K. Flanagan et al.)



# New experimental setup: $\beta$ NMR



Setup from HMI Berlin (W.-D. Zeitz)

To be installed behind REX-LINAC this Summer

# New solid state physics lab



Building 115

Ready for operation in 2008

All equipment has been moved from building 275 to the new location (except lab G. Correia)






The ISOLDE facility - Windows Internet Explorer provided by CERN

http://isolde.web.cern.ch/ISOLDE/isoldenewweb/

The ISOLDE facility



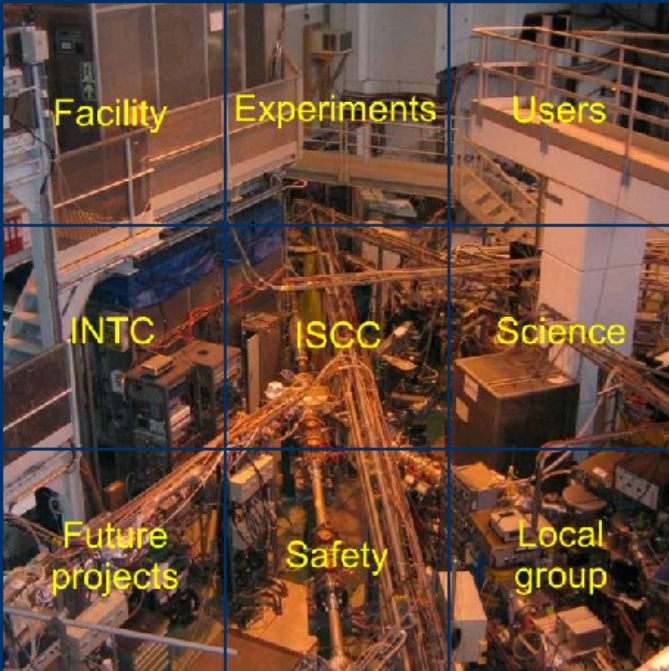
## The ISOLDE facility

CERN ISOLDE INTC ISCC IMS Schedule

News Facility Experiments Users INTC ISCC Science Future projects Safety Local group

CERN  
ISOLDE  
INTC  
ISCC  
IMS  
Schedule

Facility	Experiments	Users
INTC	ISCC	Science
Future projects	Safety	Local group



# PH Department news

- New ISOLDE Newsletter
- User/team registration issues
- Fellows/Associates
- New structure of CERN MTP (project oriented) ?

# Budget 2008

- Budget estimate from February still o.k.
- Good balance at the moment
- Received fees from Fin, CERN, D, IT, DK
- EURONS overhead (50-100 kCHF)

# MoU – new general conditions

- General streamlining and/or clarification of document
- More emphasis on safety
- Intellectual property:
  - 7.2 The Collaborating Institutions shall strive to publish any data and knowledge resulting from the experiment through Open Access journals...
  - 7.6 “proprietary information” should also be publicly available.



# Open Access

- Journals
  - APS: 975\$ for Phys Rev, 1300\$ for PRL
  - Elsevier: 3000\$ for NP A, PL B, NIM
  - Springer: 3000\$ for Eur.Phys.J. A etc
- New Journal of Physics (DPG/IOP)
  - electronic-only journal, open access
  - Article charge 1280\$ (1085\$ for DPG members)
- arXiv.org
- CERN Document Server