

ISOLDE scientific coordinator's report

ISCC meeting, November 3, 2008

A. Herlert, CERN PH-IS

Running period 2008

Status of INTC shifts

Status of ISOLDE experiments

Accelerator schedule 2008

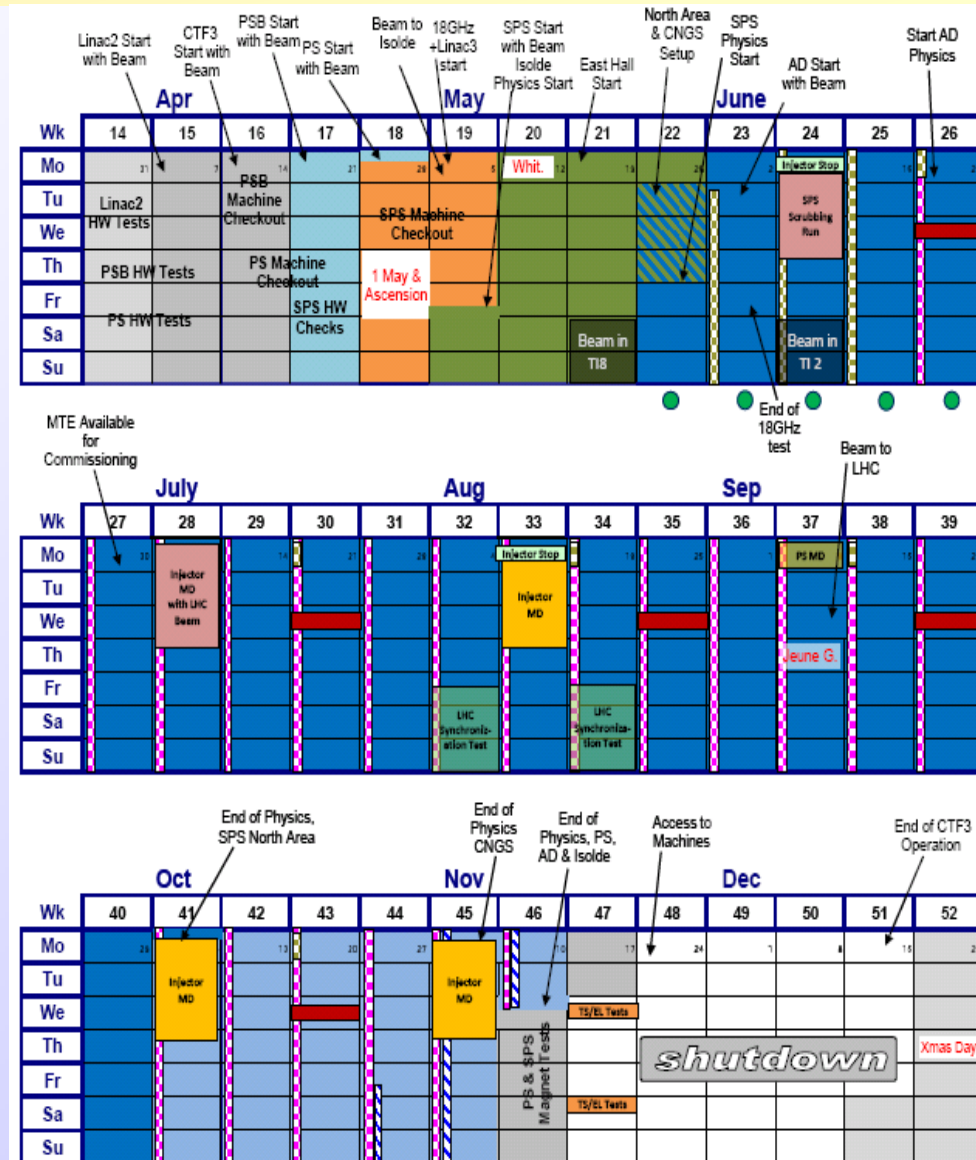
Approved by CERN Research Board November 28, 2007 (V4.1)

ISOLDE dates:

protons from PSB May 5
 physics start ISOLDE May 9
 protons stop November 12
 (i.e. 27 weeks for physics)

Stop of ISOLDE machines Dec 5

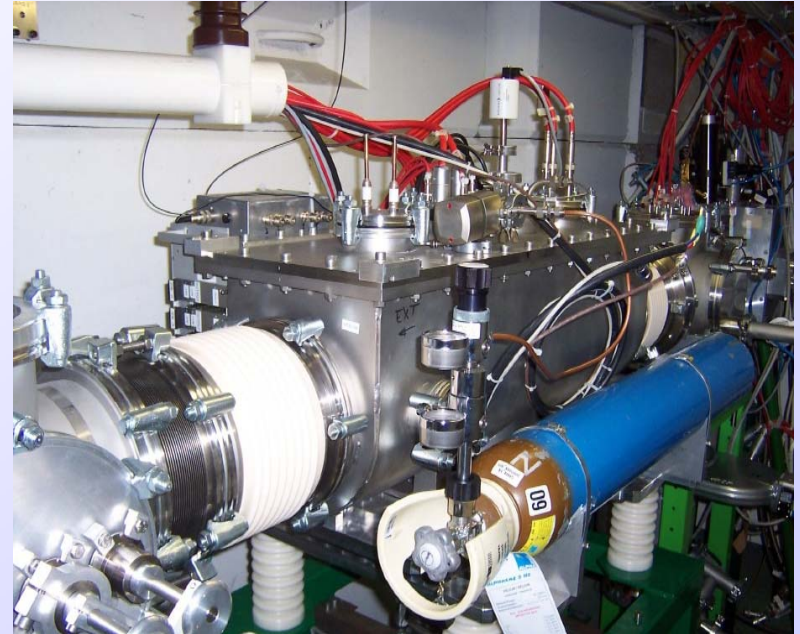
Stop of cooling water: Dec 17



ISOLDE beam requests 2008

- Limits in key resources
 - RILIS (installation of new solid state lasers, max 2000 h operation)
 - UC_x targets (about 10 new units maximum)
- Schedule:
 - 470 RIB shifts left after 2007 for approved experiments
 - 231 RIB shifts from new proposals and addenda at February INTC meeting 2008
 - in total 701 RIB shifts for 2008
 - 120 additional RIB shifts from May INTC meeting not taken into account
 - 551 RIB shifts requested
 - compare to 480 RIB shifts requested in 2007 with 407 scheduled shifts
 - requested RILIS shifts: 337 --> more than 2700 h operation
 - requested RIB shifts with UC target: 410 (together with RILIS: 308)

- ISCOOL
 - maintenance during shutdown 2007/2008
 - test in off-line period April 2008
 - permanently installed in 2008
 - running in transmission and bunch mode
 - Added additional setup and development time for 2008 schedule
- New tape station (IHPC Strasbourg):
 - Installation planned for June 2008 but delayed
 - Has been installed at LA2 beam line in September 2008
 - try to make first on-line test end of the 2008 running period



ISOLDE schedule 2008 ("final")

ISOLDE dates 2008:

2 weeks off-line period
 protons started May 5
 physics started May 9
 protons stop Nov. 12

→ 27 weeks
 for physics

Scheduled:

- 31 IS experiments
 (out of 46 requested)
- 24 target units
 (4 old units)
- 12 UC_x + 1 ThO
 (2 old UC units)

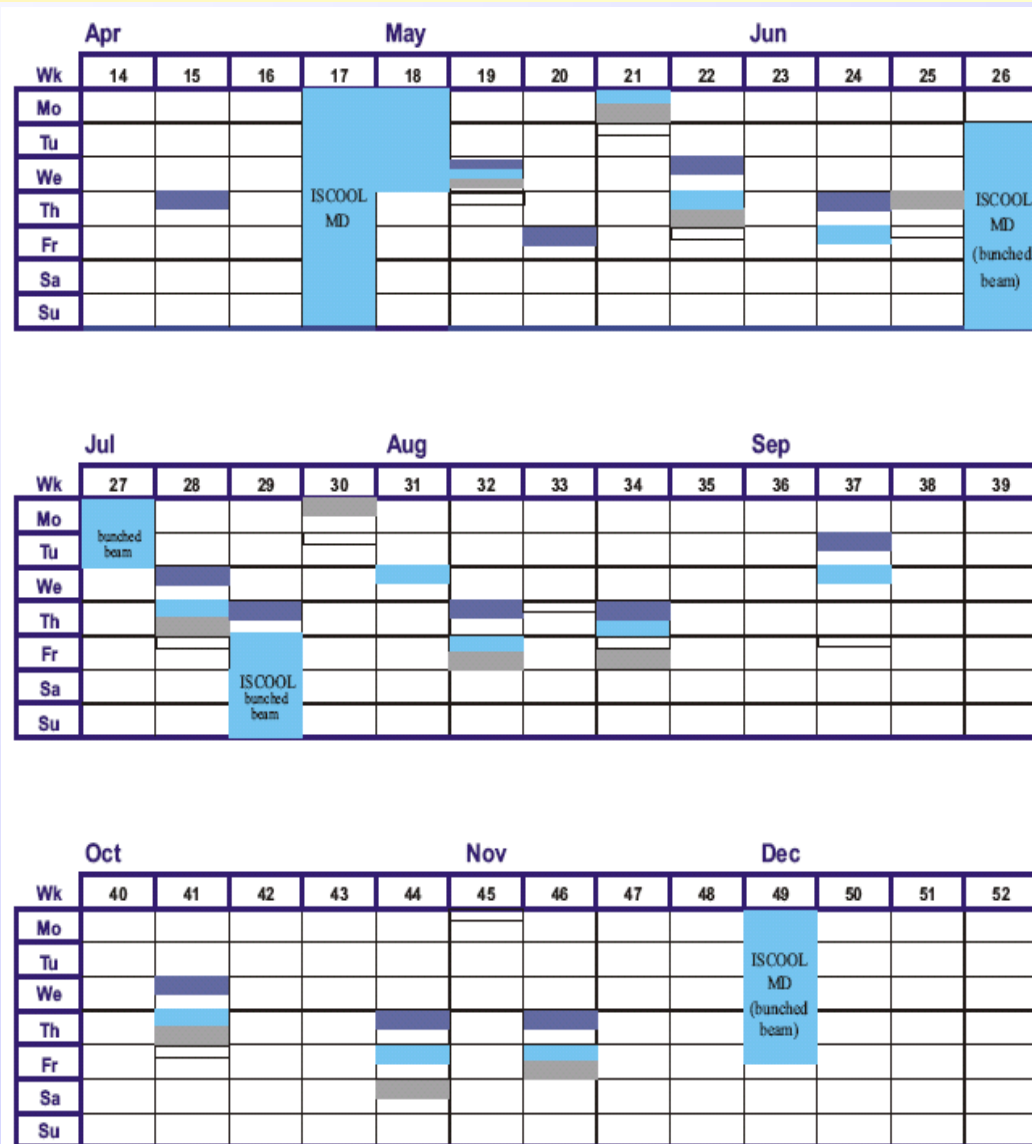
	Apr				May				Jun				
Wk	14	15	16	17	18	19	20	21	22	23	24	25	26
Mo				TISD			IS445						IS468
Tu								TSD IS393		IS466		IS449	
We								IS413					
Th				TISD	IS449								
Fr									IS473				TISD
Sa						IS445	TISD	IS453 IS450		IS390	IS449		
Su								IS442	IS466	IS442	IS464	IS468	

	Jul			Aug				Sep					
Wk	27	28	29	30	31	32	33	34	35	36	37	38	39
Mo			TSD IS447		IS435			IS460	IS461				IS448 IS442 IS472
Tu						IS434	IS458			IS465	coll		
We								IS461					
Th	IS457			IS358								IS418	
Fr			IS473	IS435	IS439	IS458							
Sa		IS398					IS460		IS465	IS443 IS453			
Su	IS390							IS461		IS440			coll

	Oct			Nov				Dec					
Wk	40	41	42	43	44	45	46	47	48	49	50	51	52
Mo							IS440						
Tu		IS452				REX MD	coll						
We					IS470								
Th			IS463										
Fr	IS452			IS470					REX MD				
Sa		IS473				IS448							
Su						IS440							

ISCOOL setup and development

- added extra setup time (not needed next year?)
- dedicated MD periods for beam development (off line and on-line)
- very good performance for laser spectroscopy experiments with bunched beams to COLLAPS (need further development)
- higher He gas consumption than expected (problem for future operation?)



RILIS off-line and on-line shifts

- 15 runs (e.g. Au new beam)
- rough estimate more than 1800h of operation (without set up time - close or above limit of 2000h)
- beam development for new Nd:YAG pump laser and standard operation with Nd:YAG lasers
- Copper vapour lasers still needed for some beams

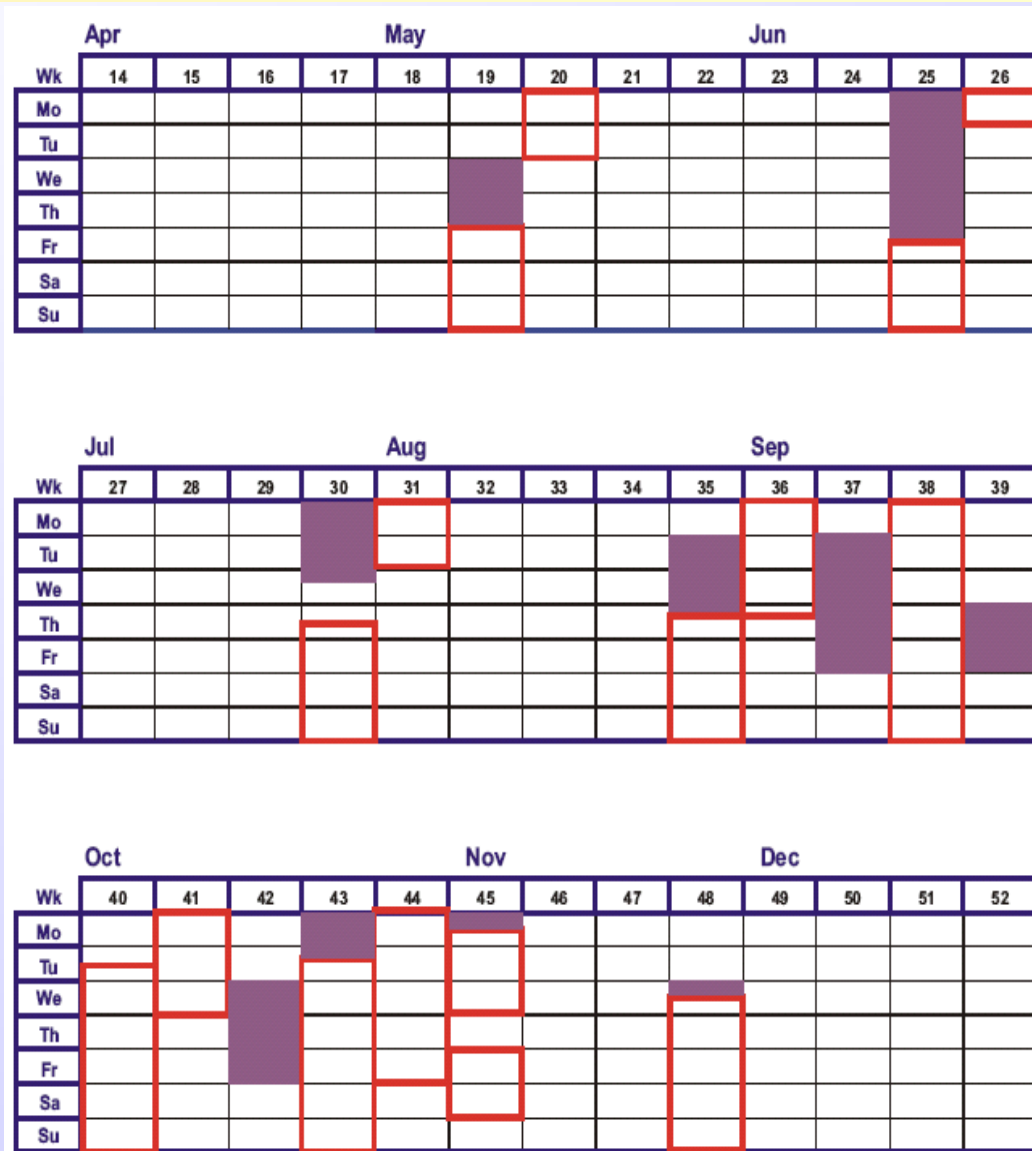
	Apr				May				Jun				
Wk	14	15	16	17	18	19	20	21	22	23	24	25	26
Mo			LIS Nd		LIS Be								
Tu							LIS Cd		LIS Ti				LIS Nd
We				LIS Ga									
Th													LIS Mn
Fr										LIS Be			
Sa													
Su													

	Jul			Aug				Sep					
Wk	27	28	29	30	31	32	33	34	35	36	37	38	39
Mo	LIS Ga			LIS Cu									
Tu		LIS Au								LIS Mn	LIS Cd		
We													
Th													
Fr													
Sa													
Su													

	Oct			Nov			Dec						
Wk	40	41	42	43	44	45	46	47	48	49	50	51	52
Mo													
Tu			LIS Mg										
We						LIS Pb							
Th													
Fr													
Sa													
Su													

REX runs in 2008

- 7 on-line runs for IS experiments
- 1 on-line and 1 off-line development run for in-trap decay studies and mass-separation tests
- Successful runs for
 IS418: $^{100,102,104}\text{Cd}$ Coulex
 IS452: $^{184,186,188}\text{Hg}$ Coulex
 IS465: $^{202,204}\text{Rn}$ Coulex
 IS468: $^{61}\text{Mn, Fe}$ Coulex
 IS470: 2n transfer ^{30}Mg (^3H target !)



Running period 2008 ... successful

- Rough start in the beginning ...
 - unstable controls
 - limitation of proton beam intensity on GPS
 - vacuum system partly in manual mode
- ... improved during the running period
 - situation of controls improved ... vacuum still problematic
 - remaining broken diagnostics to be repaired during shutdown
 - intervention for ventilation system worked out: no limitation for GPS proton beam intensity
 - new RILIS pump lasers in operation - very good performance
 - good performance of targets - however, yield not in all cases suitable and also broken target units - in addition problems with HV (polluted extraction electrode?)
 - a lot of successful runs this year - detailed report at next meeting (and some results at ISOLDE workshop)

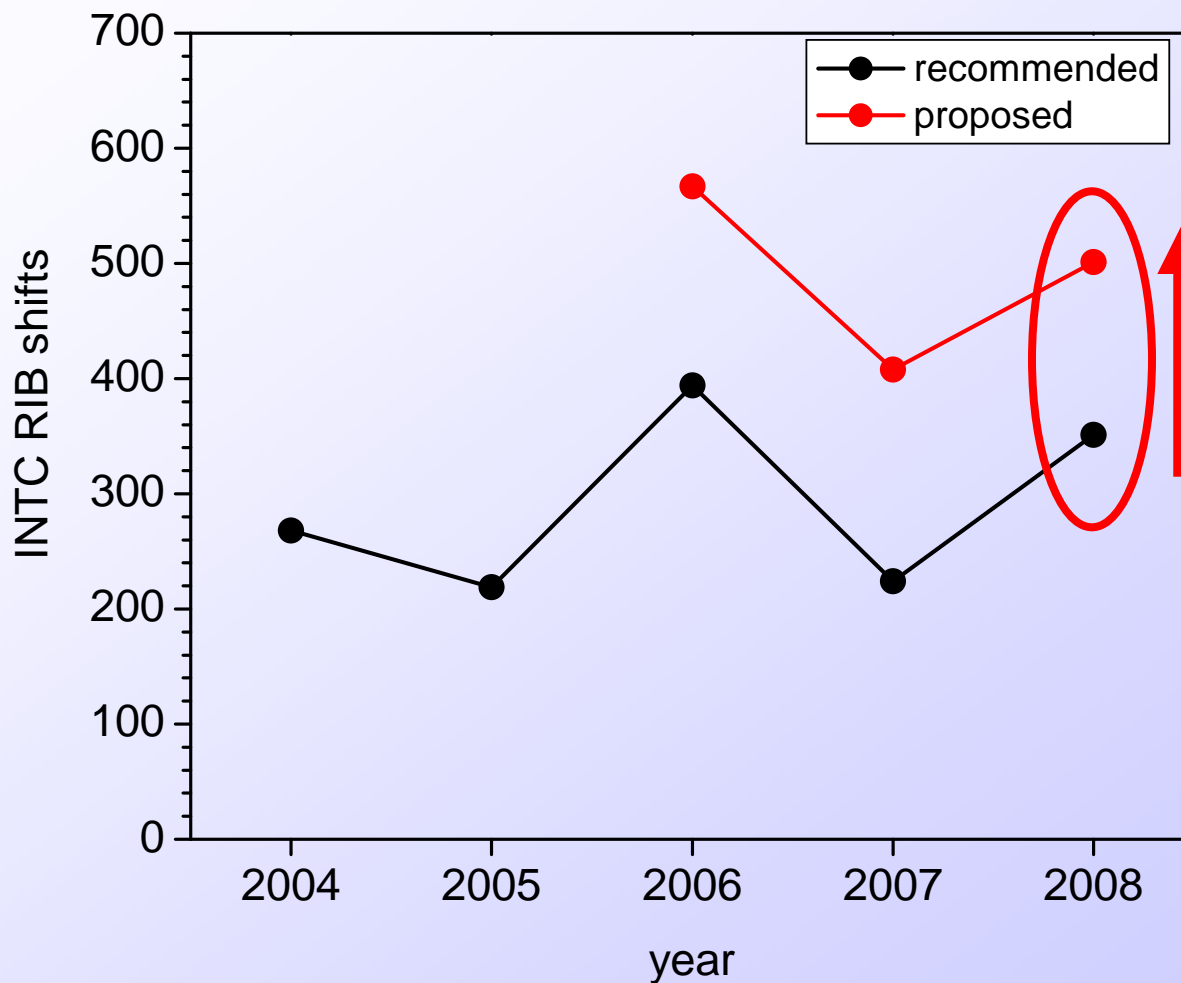
Status of INTC shifts

Situation in 2008 for scheduling...

- Active experiments 2007
 - 63 with 470 shifts in total
- INTC meeting February 2008 + Beam requests
 - 5 experiments closed
 - 9 new experiments and additional shifts for existing experiments
 - 67 active experiments with about 700 shifts

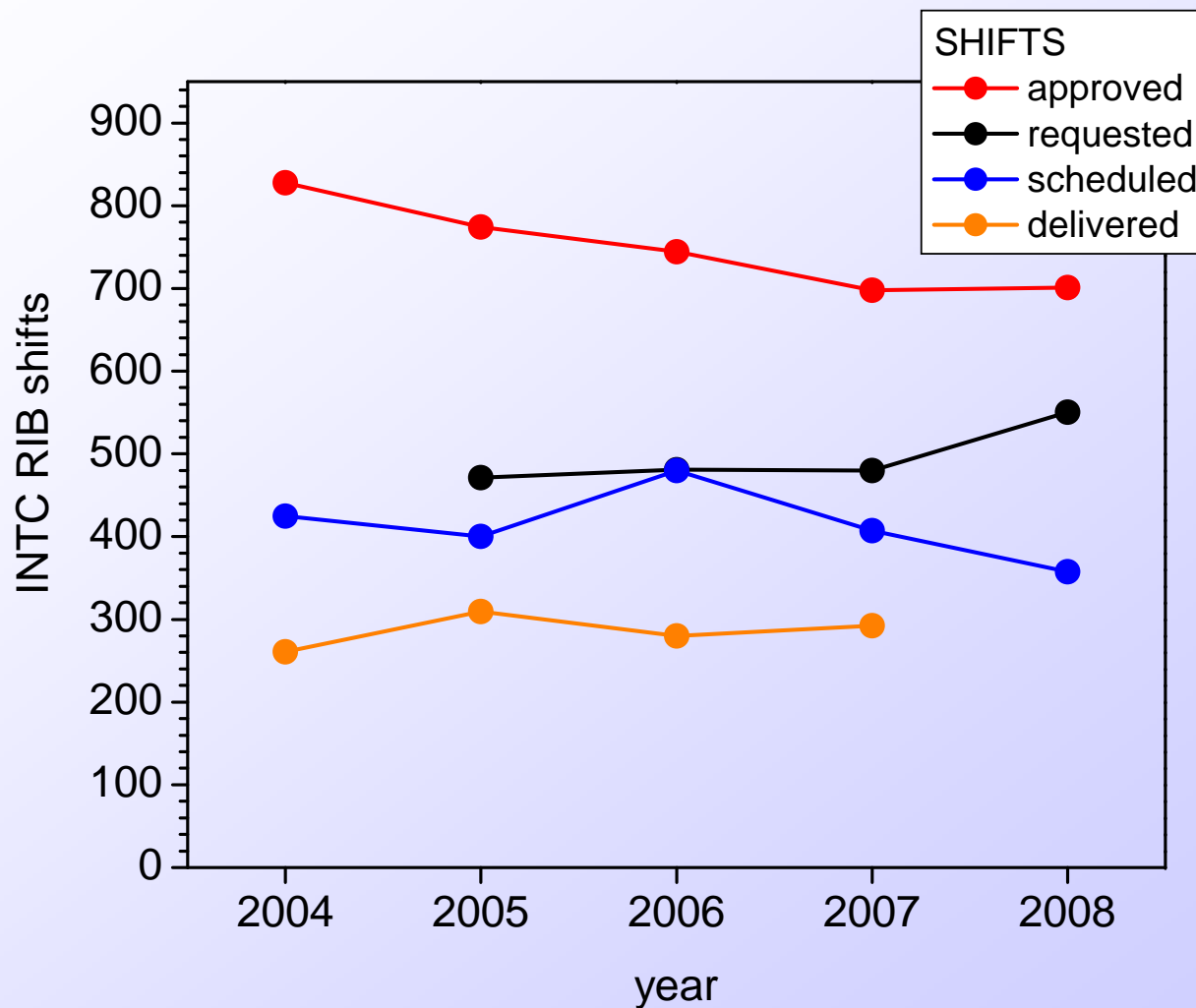
... is this healthy?

INTC shifts - evolution

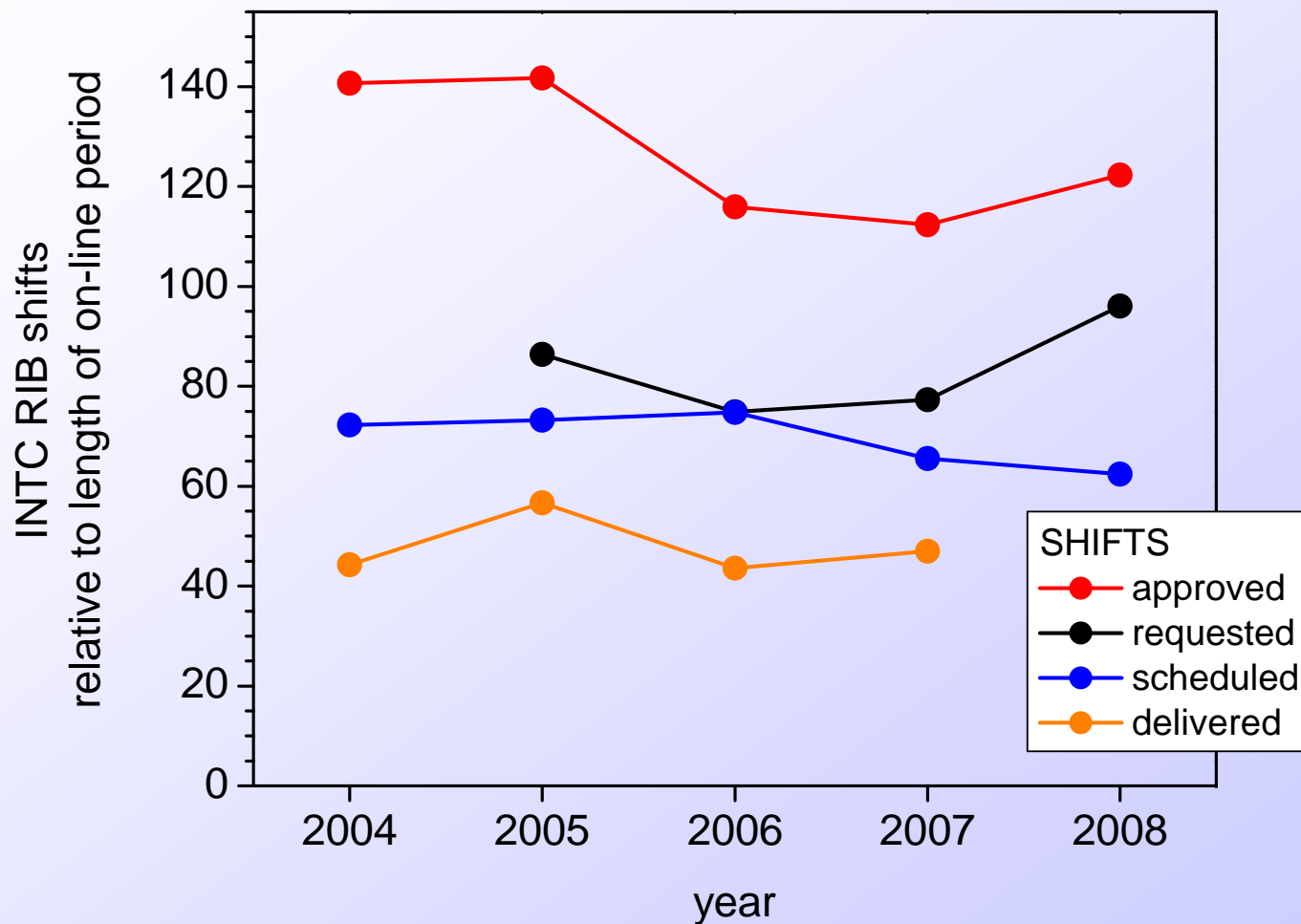


203 more
shifts proposed
in upcoming
INTC meeting

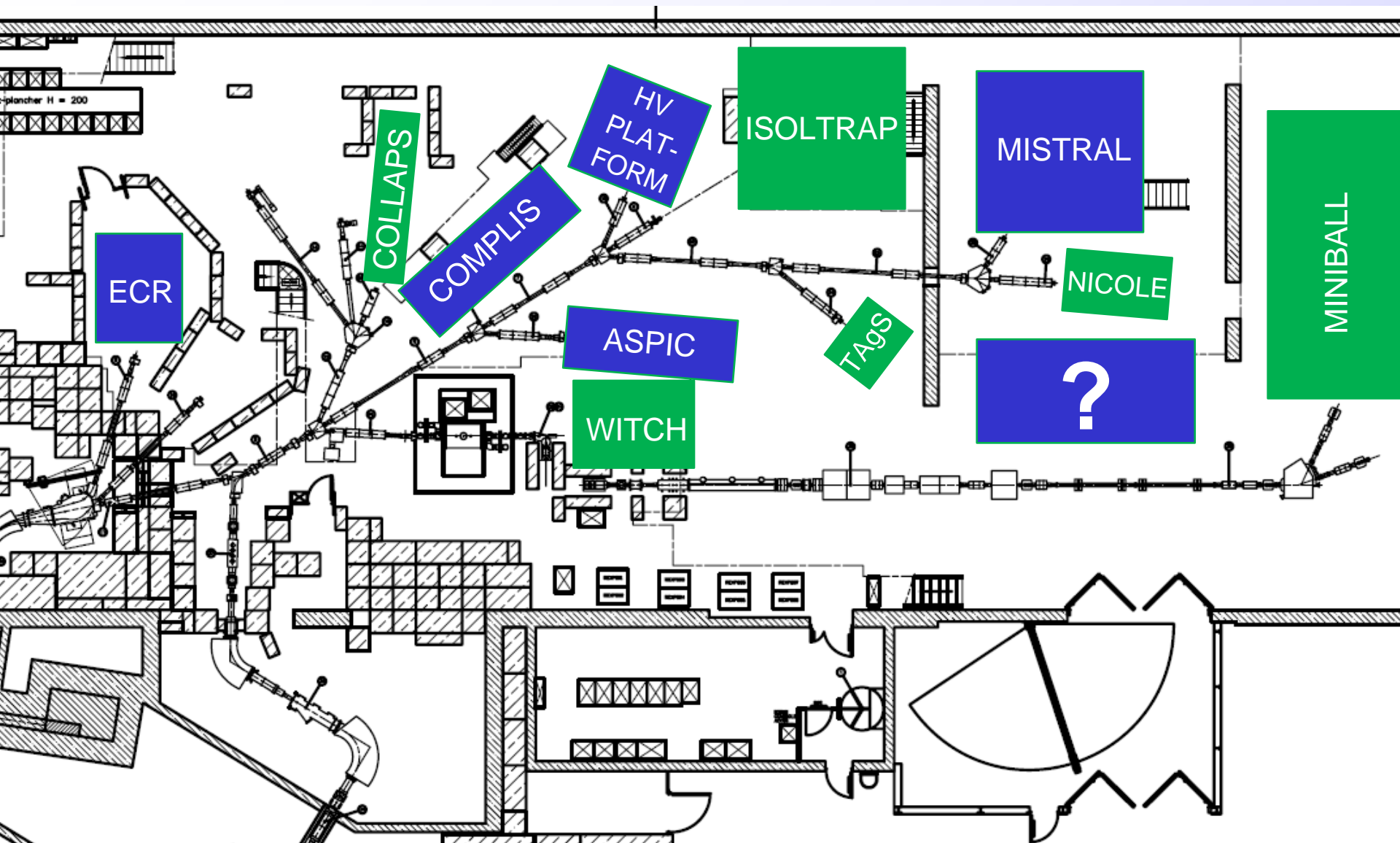
INTC shifts - evolution (II)



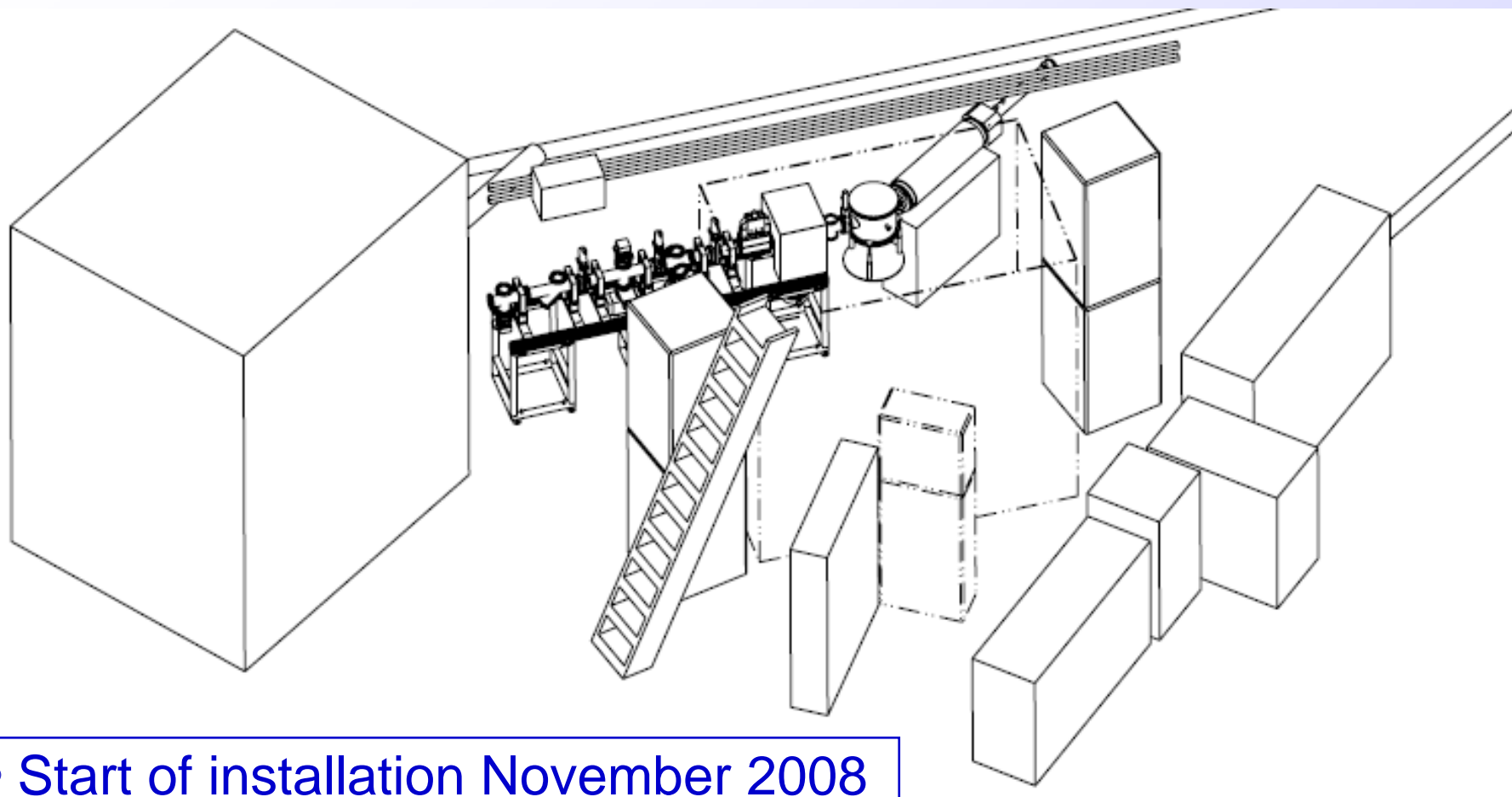
INTC shifts - evolution (III)



Follow up: Reallocation of floor space for experiments



New experiment CRIS (Flanagan et al.)



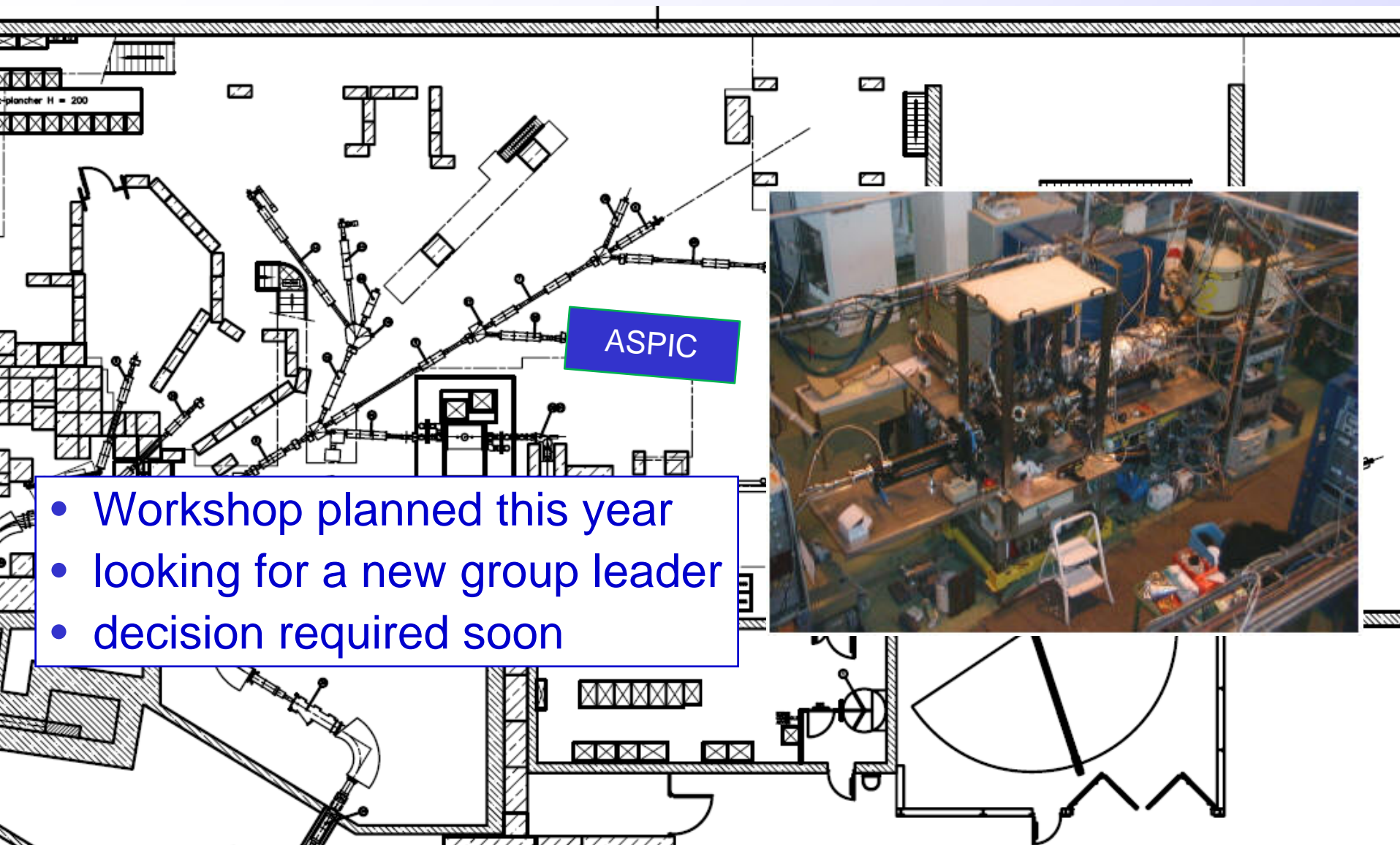
- Start of installation November 2008
- Initial safety discussion done

The MISTRAL experiment (D. Lunney)

- Experiment closed by users
- Setup to be removed latest during shutdown 2009/2010

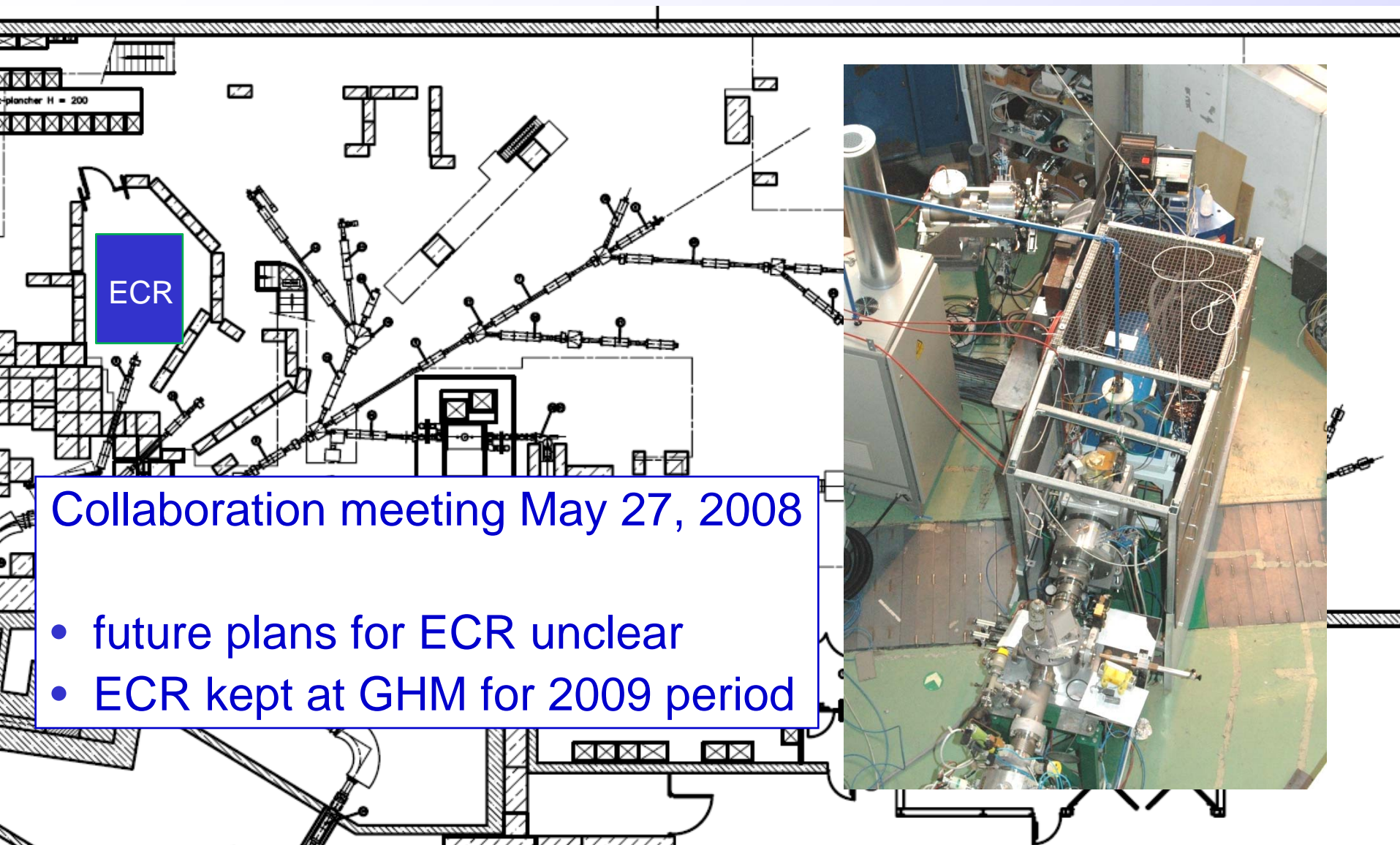


ASPIC setup (W.-D. Zeitz et al.)



- Workshop planned this year
- looking for a new group leader
- decision required soon

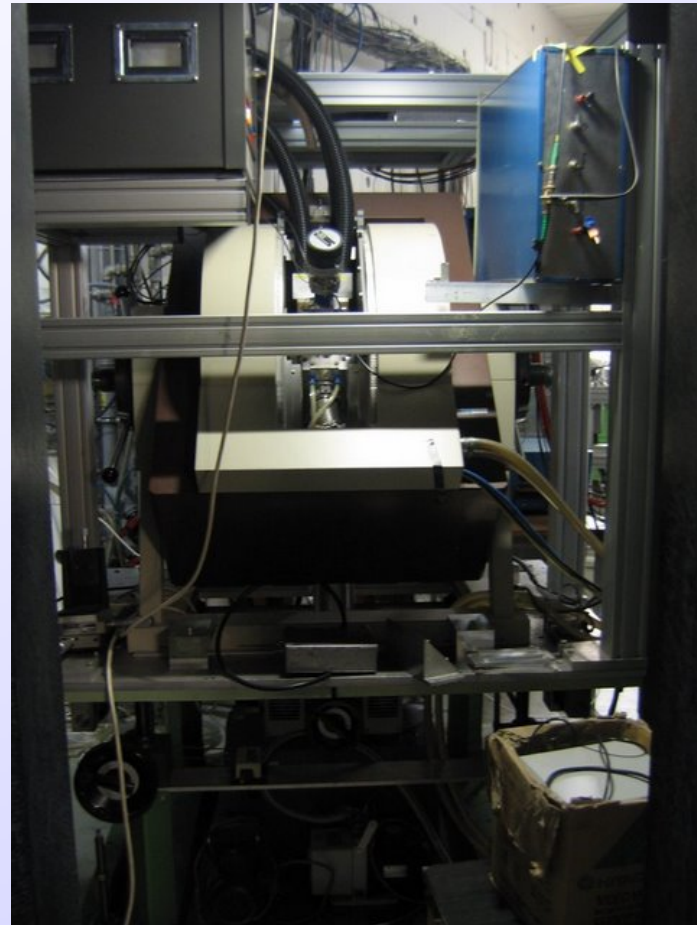
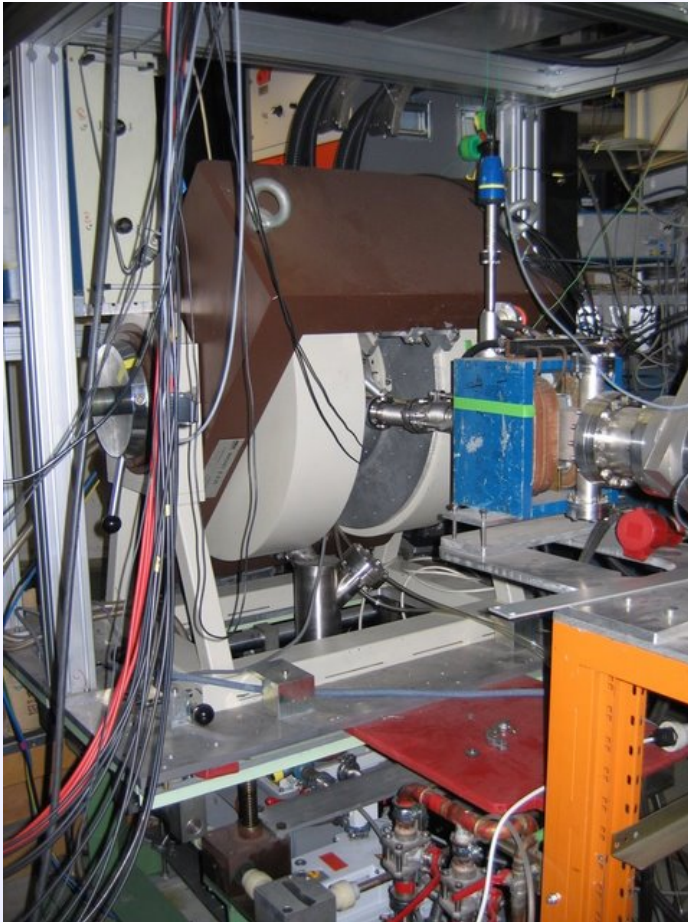
ECR charge breeder



Collaboration meeting May 27, 2008

- future plans for ECR unclear
- ECR kept at GHM for 2009 period

New experimental setup: β NMR



Setup from HMI Berlin (W.-D. Zeitz) + tilted foil chamber

Installation ongoing behind REX-LINAC (support by P. Imielski)

Accelerator draft schedule 2009

preliminary
ISOLDE dates:

protons from PSB **April 6**
 physics start ISOLDE **April 9**
 protons stop **November 14**
 (i.e. **31.5 weeks for physics**
 as compared to 27 weeks
 in 2008)

Start of n_TOF: **May 11**

Short period for shutdown
 maintenance - try to schedule
 off-line physics and/or development

